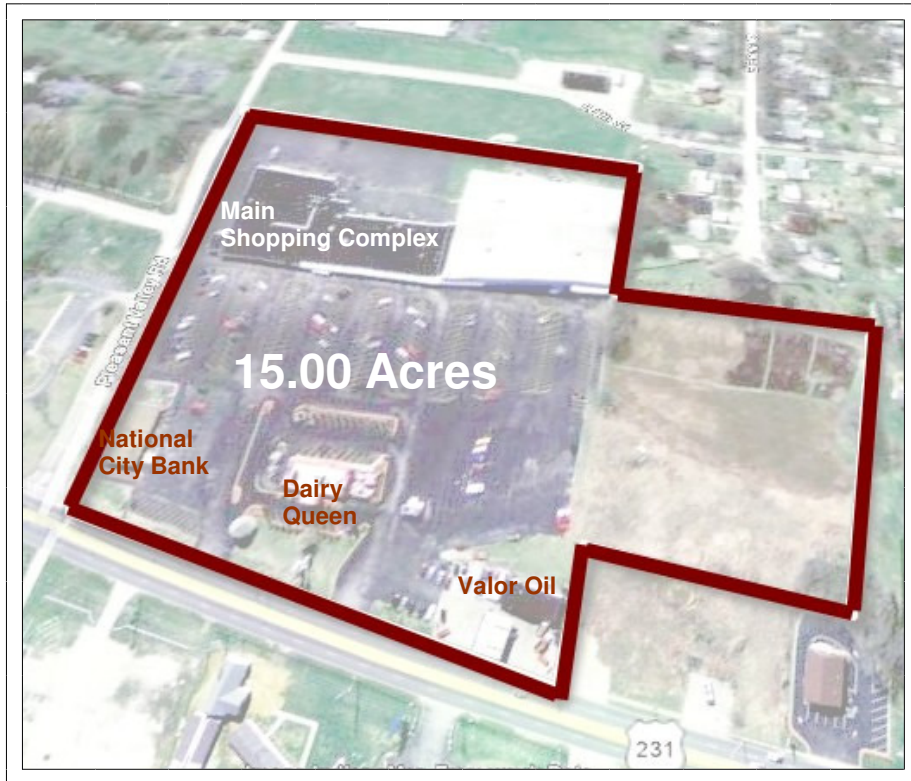


WYNDALL'S CENTER

22,000 sq. ft for Lease

240 sq. ft. for Lease

Location: 3012 E. 4th Street, Owensboro, Ky. This property is located at the intersection of US 60 east (Also US 231) and Pleasant Valley Road. This is just at the east edge of Owensboro. It is near



*The 22,000 sq.ft is equipped for a modern grocery
The 240 sq.ft. has a drive up window.*

Think of the Possibilities! Lots of land and Paved Parking! Great Location!

Nearest retail to the new Hospital Campus! Great expansion possibilities!

Land: The developed shopping center has 12.4 acres, plus 2.95 acres to the west for expansion.

Condition: This center has been continuously maintained and the paved area is in good condition. The grocery is equipped with coolers, bailer, scanner checkouts, shelves and more.

For further information, Contact Silas Deane 689-1717, or

John C. Howard 314-0784 or visit our web page at: AllianceRealEstate.org

**Alliance**
Real Estate, Auctions and Estate Services
Land and Commercial Specialists
270-689-1717



Silas Deane, CAI, CES, GRI
Broker